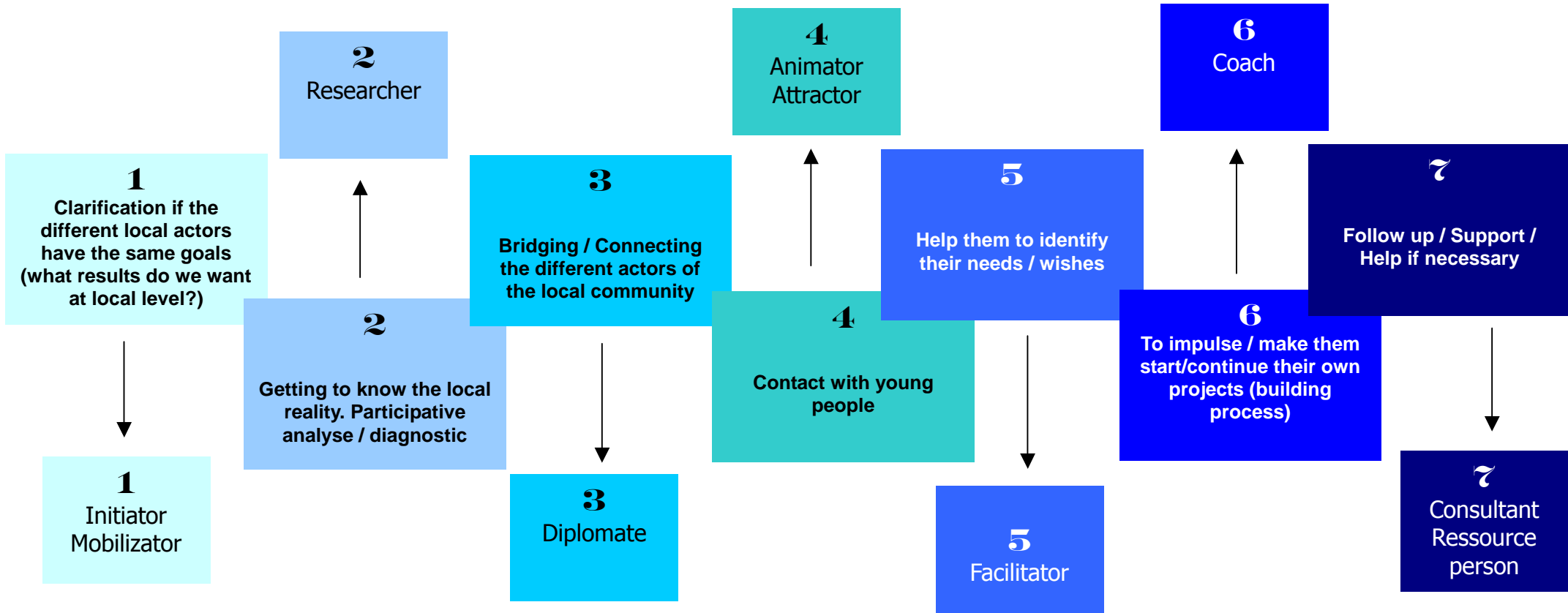


ERQUY PROCESS ON AYP

+

ROLE AND PLACE OF YOUTH WORKER



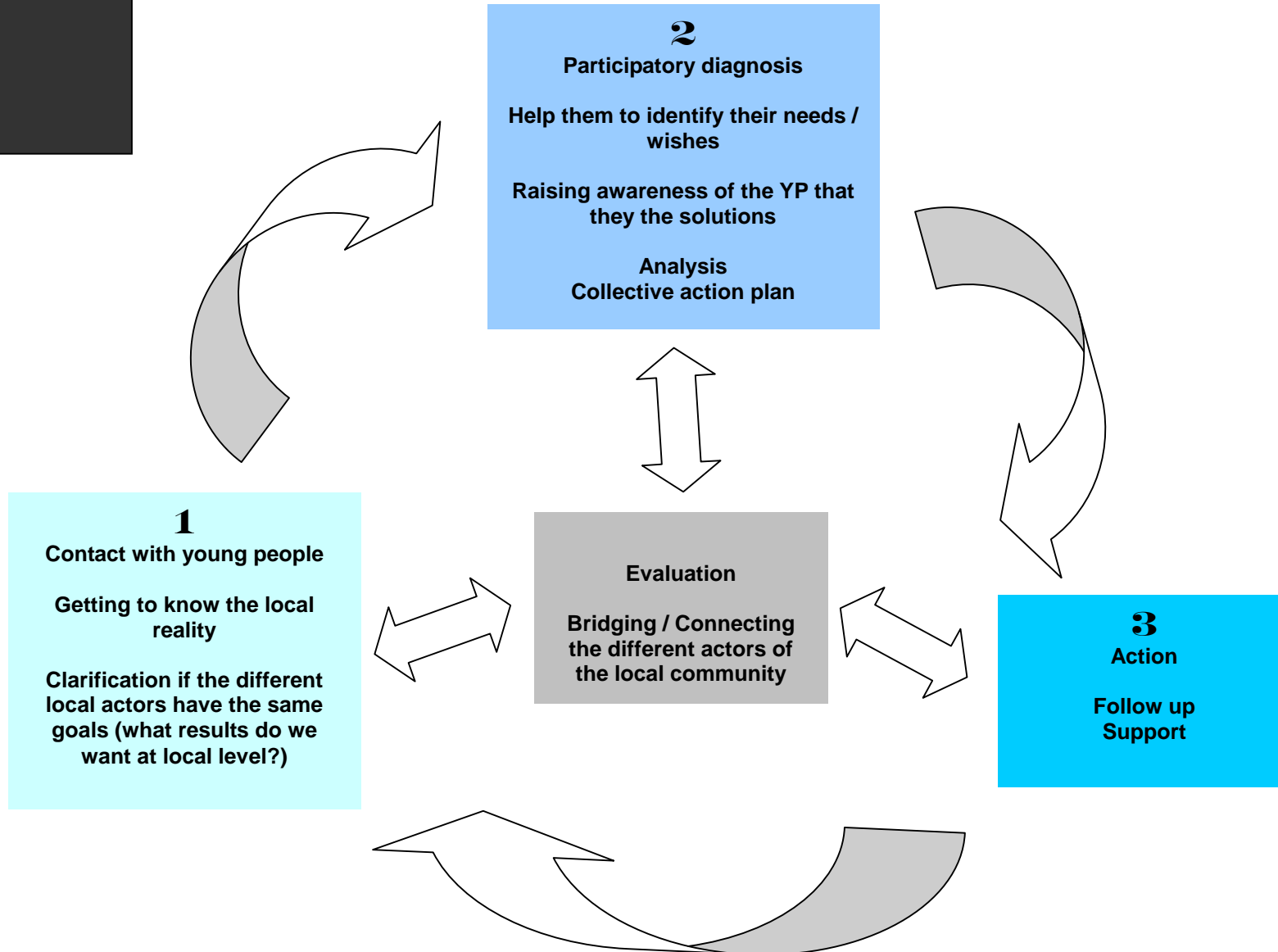
BANKYA PROCESS ON AYP I



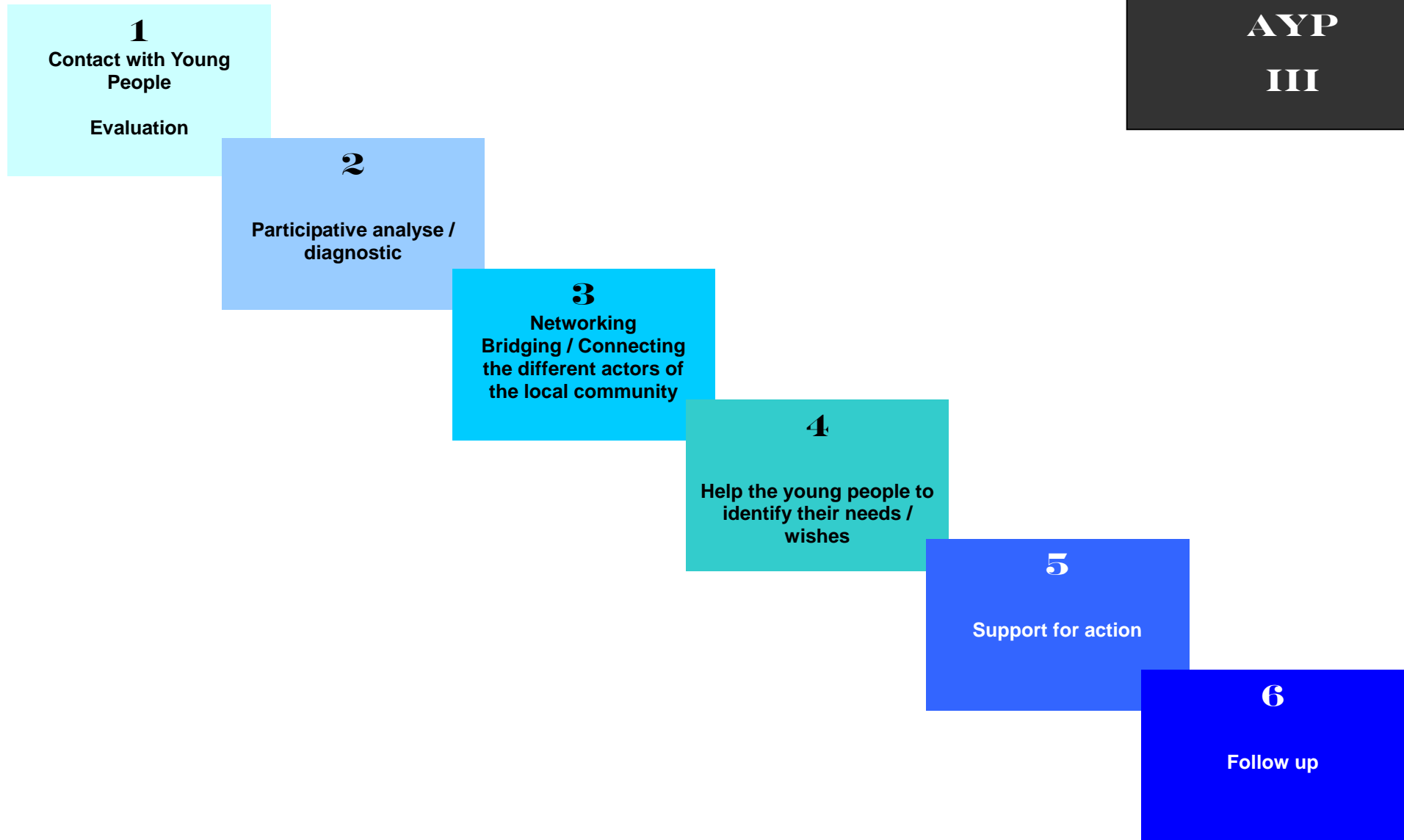
Remarks

- ▶ Contact with YP earlier
- ▶ Diagnosis and needs assessment are together with YP
- ▶ Local networking based on concrete ideas / needs

**BANK YA
PROCESS ON
AYP
II**

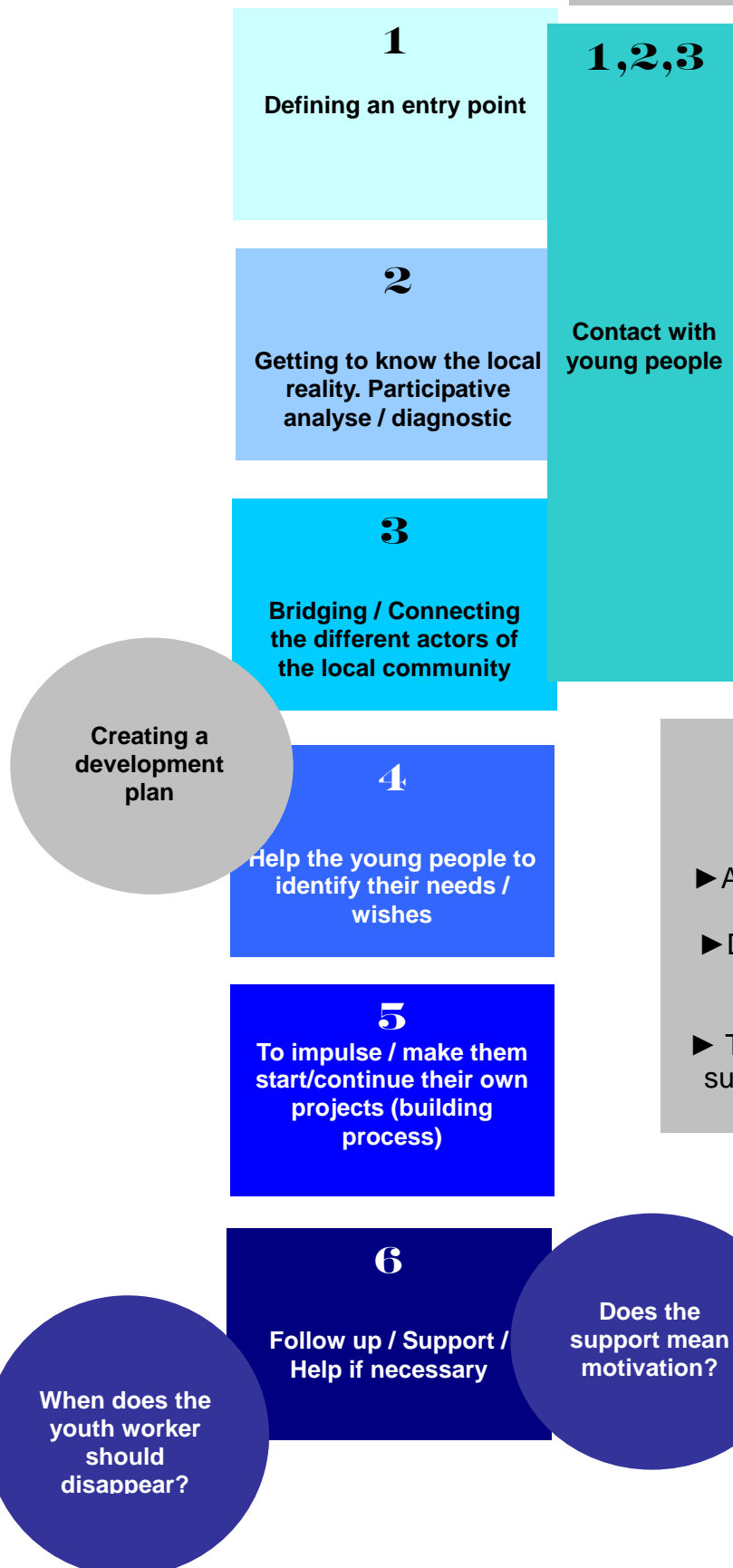


**BANKYA
PROCESS ON
AYP
III**



BANKYA PROCESS ON AYP IV

THE ENOARQUY PROCESS



Remarks

- ▶ Change the order of the steps
- ▶ Clearest and precise actions
- ▶ All the steps between 2 and 6 are the steps for participatory diagnosis?
- ▶ Does Impact in Community assure a legitime diagnosis?
 - ▶ Steps 2 does include step 5?
- ▶ To analyse some best practices to be sure that this are action steps and not theoretical ones?